
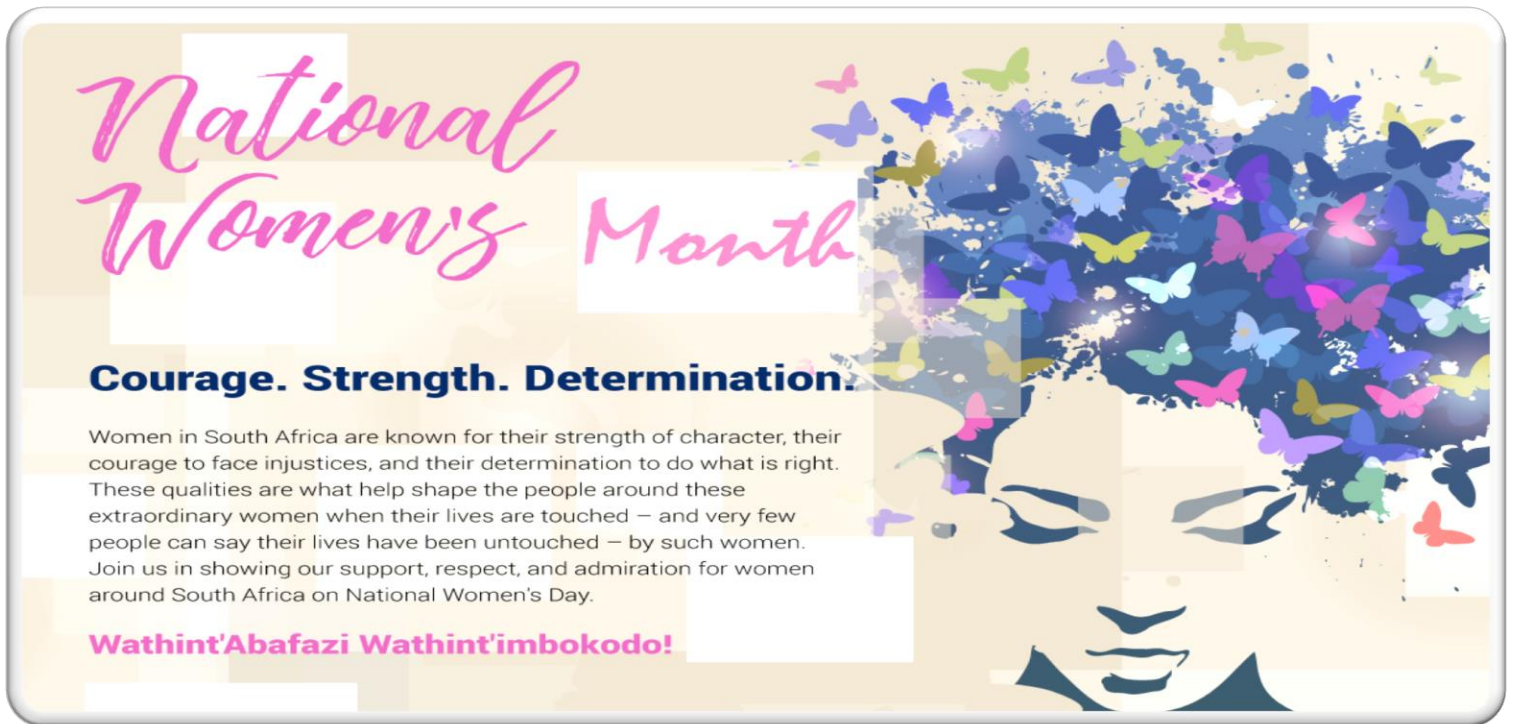


**Johannesburg Chamber of  
Commerce and Industry**  
**Women in Business**

Contact us:  
Zinzi Mpela · Women in Business  
Email: [womensdesk@jcci.co.za](mailto:womensdesk@jcci.co.za) · Tel: 011 726 5300 · Website: [www.jcci.co.za](http://www.jcci.co.za)  
Address: Johannesburg Chamber of Commerce and Industry, 6<sup>th</sup> floor, JCC House, Cnr Empire Rd and Owl St, Milpark



**THE JCCI WOMEN IN BUSINESS INITIATIVE** recognizes that across Africa, women are the mainstay of the entrepreneurial sector-elevating and empowering them will benefit their families, communities, and the national economy.



*National Women's Month*

**Courage. Strength. Determination.**

Women in South Africa are known for their strength of character, their courage to face injustices, and their determination to do what is right. These qualities are what help shape the people around these extraordinary women when their lives are touched – and very few people can say their lives have been untouched – by such women. Join us in showing our support, respect, and admiration for women around South Africa on National Women's Day.

**Wathint'Abafazi Wathint'imbokodo!**

Wathint'Abafazi Wathint'imbokodo!

Women in South Africa are known for their strength of character, their courage to face injustices, and their determination to do what is right. These qualities are what help shape the people around these extraordinary women when their lives are touched – and very few people can say their lives have been untouched – by such women. Join us in showing our support, respect, and admiration for women around South Africa on National Women's Day.

## Feedback on the webinar series in association with Milpark Education

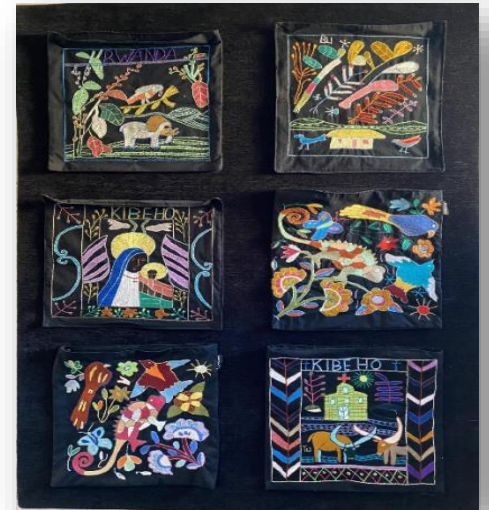
The following webinars were planned to give women in business a practical input on the importance and value of communication, overcoming fear of presenting ideas and negotiating skills in business deals.

### How to improve communication - 14<sup>th</sup> July 2020

Delene Slabbert, a language practitioner since 1993, translates and edits various research papers. She facilitated a webinar on the importance of written communication in our personal and business life and the value of strategic messages.



Drawing inspiration from the *Rwandan, Kibeho* anecdote, Delene highlighted the fact that there is more than one way for an entrepreneur to communicate, be it written, drawn, or spoken communication as shown by the **embroidery of the Kibeho women**.



### How to overcome the fear of public speaking - 21<sup>st</sup> July 2020

**'Give yourself permission to show up.'**

Dr. Manti Grobler a consultant, lecturer, and life coach, presented a webinar on how to communicate in a confident manner. Her interactive webinar focused on the importance of a consistent and recognizable brand. She discussed how to confidently and efficiently market one's products and services and align the brand to the audience.





## Understanding principles of successful negotiation - 28<sup>th</sup> July 2020

Rita Motlana is a consultant in the health and development sector with over 17 years of experience, having previously worked as a Senior Manager in the Advisory services department at PricewaterhouseCoopers Namibia, Deloitte South Africa and Deloitte Zambia. Rita focused on the power of negotiating from a position of strength and authenticity.

She is currently leading the Girls 4 Girls project. For more information on how to become a mentor/mentee contact them on [g4grsa@gmail.com](mailto:g4grsa@gmail.com)



## Month of August

### Financial Fitness Training



Div De Villiers, a specialist in finance with over 20 years' experience in business, is currently training 40 women entrepreneurs on how to manage their business finances. The month-long training will focus on 8 topics, the modules covered thus far are:

- **Basic financial concepts**
- **Profits**
- **Cash flow**
- **Assets and Liabilities**
- **Trading Cycle**

Div's interactive training is tailored to help each woman both during and post COVID-19



## The Total Woman

Lillian Bususu opened the session with her inspiring story titled ‘The Total Woman’. She is the founder and CEO of Global Woman Impact, an organisation seeking to develop women from all walks of life to become strategically driven leaders in every area in which they function.

Based on her experience of building her own business, Lillian stressed the importance of women developing and empowering themselves. Through her

experience, she now stands firm in her belief that; “**The power of a Woman resides in the true knowledge of her significance...**”

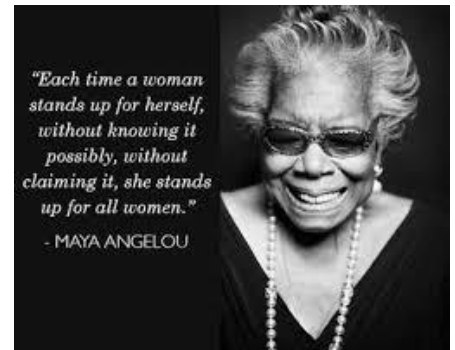
Contact details: [Lbususu5@gmail.com](mailto:Lbususu5@gmail.com)



**Global Woman Impact**  
Empowering Destinies  
Empowering Destinies  
Global Woman Impact

## PROFILING ‘WOMEN IN BUSINESS’

The Women in Business network is growing, and the monthly online events give women an opportunity to network and learn from the insights shared by participants.



### Luanda Wagener

Founder of: **JJSL Vukuzakhe Construction**

Is excited about the world of building and construction, and the job opportunities available.

For more information feel free to contact:

Luanda Wagener @ 082 332 0940 or 067 315 0813 Email: [luanda@jjsl.co.za](mailto:luanda@jjsl.co.za) or [luandaw@gmail.com](mailto:luandaw@gmail.com) for further engagement





## Shanaas Kannemeyer

Founder of **SK Botanicals (Skin care products)**, Shanaas has a unique offering of beauty products That contribute to women’s confidence.

For more information on SK botanicals contact:

**Email:** sales@skbotanicals.com

**Website:** www.skbotanicals.com



## Upcoming events

- Finance training continues until end of August
- Strategic collaboration meeting with Circle of Global Businesswomen on the 21<sup>st</sup> August 2020
- Brand Management training from the 15<sup>th</sup> -18<sup>th</sup> September 2020
- Exciting collaboration with Women of Stature to introduce women in business to an international network.

## Exports for Growth

Exports play a major role in boosting the economy and creating employment. JCCI’s Global Export Accelerator has offered 50 women entrepreneurs an opportunity to become successful exporters and the selection is still in progress.

For more info contact Zinzi Mpela at [Womensdesk@jcci.co.za](mailto:Womensdesk@jcci.co.za) for more information on joining the world of international trade.

### About the partners



The Deutsche Gesellschaft für Internationale Zusammenarbeit (GIZ) GmbH is a federal enterprise with worldwide operations in 120 countries. GIZ supports the German Government in the fields of international cooperation for sustainable development and international education. The GIZ programme E4D: Employment and Skills for development in Africa, cooperates with the private and public sector in partnership by developing projects with the objectives to increase income, improve the employment situation, enhance business capacity and to upscale partner models.



## Quoniam

QUANTITATIVE INVESTMENT ENGINEERING

Quoniam Asset Management GmbH is an independently operating asset management boutique led by an established management team. Its business model focuses on quantitative investment strategies for institutional investors in the asset classes of global equities and bonds. By supporting the women’s desk, Quoniam demonstrates global social responsibility by investing into education and job creation specifically for women in a developing country.



Johannesburg Chamber of Commerce and Industry

The Johannesburg Chamber of Commerce and Industry, founded in 1890, is a not for profit, independent, association that represents the interests of business and plays a key role in the facilitation and promotion of international trade. As part of its programme to develop SMEs and contribute to growing the economy, JCCI focuses on training and supporting entrepreneurs to become sustainable exporters. Very importantly the Chamber assists them to access market opportunities.